

DYL 306

S-TYPE FORCE SENSOR

Product Advantages

S-Type Force Sensors stands out with its compact design and high precision. Made of stainless steel, it is capable of measuring force in both tension and compression directions. Thanks to its IP66 protection rating, it is resistant to dust and water, making it reliable in harsh industrial environments. They are ideal for applications requiring precise measurement of tension and compression forces. Its compact and robust design ensures reliable performance in confined spaces and challenging environmental conditions.



Design Characteristics

- Extremely rigid, so that high natural frequencies can be attained
- High loading capacity
- Durable
- Compact design
- Broad measuring range
- Direct measurements in the force flux
- Extensive range.

Areas of application

- Material Testing Machines
- Assembly Lines
- Calibration Systems
- Automation and Robotics
- General Testing Applications

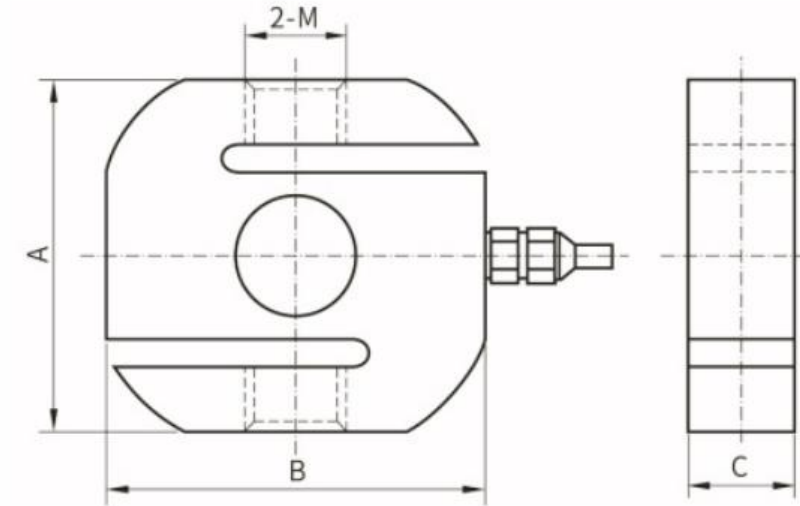
Specifications

Rated Load (kN)	0.2/0.3/0.5
	1/1.5/2/3/5
	10/20/30/50
Comprehensive Error	±0.02 ~ 0.05 %F.S
Rated Output	2.0 mV/V
Zero Balance	±1 %F.S
Creep	±0.02%F.S/30min
Input Resistance	380 ± 10Ω
Output Resistance	350 ± 3Ω
Temp. Effect on Span	±0.02 %F.S/10°C
Temp. Effect on Zero	±0.02 %F.S/10°C
Operating Temp. Range	-20 ~ +65°C
Excitation (Recommended)	10 VDC
Safe Overload	150%F.S
Ultimate Overload	200%F.S
Insultation Resistance	≥5000MΩ (50VDC)
Cable	4-Wire Shielded Cable
Cable Length	<5t , 3m / ≥ 5t, 6m
Ingress Protection	IP65

Wiring Code

Exc+	Red	●
Exc-	Black	●
Sig+	Green	●
Sig-	White	○

Dimensions



Rated Load		Size (mm)			
kN	Kg.f / T.f (Tonne)	A	B	C	M
0.2 ~ 1.5	20 ~ 150 Kg.f	64	70	12	M8
2 ~ 5	200 ~ 500 Kg.f	64	70	20	M12
10	1 T.f	64	70	25	M12
20 ~ 50	2 ~ 5 T.f	90	90	32	M20

Ordering Code

